



NATA LIGHTING CO.,LTD.  
www.nata.cn  
Email:info@nata.com  
Tel:+86-750-3770000 Fax:+86-750-3771111  
Address:380JinOu Road,GaoXin Zone,Jiang Men City,Guangdong,China

NT

Client:

LumCAT: 1-1379-L

Luminaire: 92.70.410.00

Report No: 20231106-B014

Ballast type: AC

Test No: 20231106-C014

Voltage(V): 35.150

LampCAT: Fortimo\_SLM\_C\_1203

Current(A): 0.246

Lamp flux(lm): 1385.0

Power (W): 8.646

Number of Lamps: 1

PF: 0.000

Length(mm): 0

Width(mm): 0

Phm Type: C

Height(mm): 0

### Photometric Results

Lumens(lm): 1268.77, Efficiency(%): 91.61% , Luminous Efficacy(lm/W): 146.75

Central intensity(cd): 3018.432, Maximum intensity(cd): 3018.432

Angle of maximum intensity: C=0.0  $\gamma$ =0.0

Beam Angle(50%Imax): [C0/180]Total=36.6

[C90/270]Total=36.6

Field angle(10%Imax): [C0/180]Total=60.4

[C90/270]Total=60.4

Beam angle of C0 plane : 36.58

Average BeamAngle(IEC 61341):36.58

Maximum s/h(1/2): C0\_180=0.61 C90\_270=0.61

Maximum s/h(1/4): C0\_180=0.59 C90\_270=0.59

Up flux rate of lamp(%): 0.00%

Down flux rate of lamp(%): 91.61%

Up flux rate of LUM(%): - -

Down flux rate of LUM(%): 100.00%

CIE Type : Direct lighting

Output flux ratio in  $\pi$  solid angle : 98.136%

$\gamma(^{\circ})$	Average I(cd)	Zonal F(lm)	Sum F(lm)	Eff Flux(%)	Eff Sum(%)
0.0	3018.432	0.000	0	0.00%	0.00%
1.0	3015.526	2.887	2.887	0.21%	0.23%
2.0	3008.814	8.647	11.534	0.62%	0.91%
3.0	3003.417	14.379	25.913	1.04%	2.04%
4.0	2983.351	20.040	45.953	1.45%	3.62%
5.0	2950.900	25.529	71.482	1.84%	5.63%
6.0	2900.044	30.748	102.23	2.22%	8.06%
7.0	2840.193	35.630	137.859	2.57%	10.87%
8.0	2771.762	40.164	178.023	2.90%	14.03%
9.0	2691.223	44.275	222.298	3.20%	17.52%
10.0	2604.871	47.928	270.225	3.46%	21.30%
11.0	2504.266	51.051	321.276	3.69%	25.32%
12.0	2387.401	53.473	374.749	3.86%	29.54%
13.0	2271.573	55.290	430.039	3.99%	33.89%
14.0	2131.667	56.361	486.4	4.07%	38.34%
15.0	1997.850	56.692	543.092	4.09%	42.80%
16.0	1860.850	56.541	599.633	4.08%	47.26%
17.0	1702.123	55.485	655.118	4.01%	51.63%
18.0	1565.746	53.880	708.998	3.89%	55.88%
19.0	1369.337	51.064	760.063	3.69%	59.91%
20.0	1229.023	47.557	807.62	3.43%	63.65%
21.0	1144.152	45.570	853.19	3.29%	67.25%
22.0	1023.481	43.560	896.749	3.15%	70.68%
23.0	901.579	40.393	937.142	2.92%	73.86%
24.0	790.186	36.988	974.13	2.67%	76.78%
25.0	690.827	33.675	1007.805	2.43%	79.43%
26.0	598.829	30.442	1038.248	2.20%	81.83%
27.0	514.602	27.240	1065.488	1.97%	83.98%
28.0	439.805	24.164	1089.651	1.74%	85.88%
29.0	369.693	21.179	1110.83	1.53%	87.55%
30.0	314.229	18.466	1129.296	1.33%	89.01%
31.0	263.040	16.065	1145.36	1.16%	90.27%
32.0	230.776	14.147	1159.508	1.02%	91.39%
33.0	182.999	12.190	1171.698	0.88%	92.35%
34.0	152.305	10.147	1181.845	0.73%	93.15%
35.0	116.997	8.364	1190.209	0.60%	93.81%
36.0	94.696	6.740	1196.949	0.49%	94.34%
37.0	76.720	5.591	1202.539	0.40%	94.78%

$\gamma(^{\circ})$	Average I(cd)	Zonal F(lm)	Sum F(lm)	Eff Flux(%)	Eff Sum(%)
38.0	63.788	4.690	1207.229	0.34%	95.15%
39.0	52.046	3.954	1211.183	0.29%	95.46%
40.0	43.536	3.334	1214.517	0.24%	95.72%
41.0	37.052	2.870	1217.386	0.21%	95.95%
42.0	32.077	2.512	1219.898	0.18%	96.15%
43.0	28.542	2.246	1222.144	0.16%	96.33%
44.0	25.470	2.039	1224.182	0.15%	96.49%
45.0	22.986	1.862	1226.044	0.13%	96.63%
46.0	21.145	1.726	1227.77	0.12%	96.77%
47.0	19.512	1.617	1229.387	0.12%	96.90%
48.0	18.121	1.521	1230.909	0.11%	97.02%
49.0	16.959	1.441	1232.349	0.10%	97.13%
50.0	15.900	1.370	1233.719	0.10%	97.24%
51.0	15.091	1.311	1235.03	0.09%	97.34%
52.0	14.357	1.264	1236.294	0.09%	97.44%
53.0	13.617	1.217	1237.511	0.09%	97.54%
54.0	13.036	1.175	1238.686	0.08%	97.63%
55.0	12.503	1.140	1239.826	0.08%	97.72%
56.0	12.032	1.109	1240.934	0.08%	97.81%
57.0	11.603	1.081	1242.015	0.08%	97.89%
58.0	11.216	1.055	1243.07	0.08%	97.97%
59.0	10.863	1.032	1244.102	0.07%	98.06%
60.0	10.545	1.011	1245.114	0.07%	98.14%
61.0	10.247	0.992	1246.106	0.07%	98.21%
62.0	9.984	0.975	1247.081	0.07%	98.29%
63.0	9.735	0.959	1248.04	0.07%	98.37%
64.0	9.486	0.943	1248.983	0.07%	98.44%
65.0	9.279	0.929	1249.912	0.07%	98.51%
66.0	9.064	0.915	1250.827	0.07%	98.59%
67.0	8.863	0.901	1251.729	0.07%	98.66%
68.0	8.677	0.889	1252.617	0.06%	98.73%
69.0	8.490	0.876	1253.493	0.06%	98.80%
70.0	8.331	0.864	1254.357	0.06%	98.86%
71.0	8.172	0.853	1255.21	0.06%	98.93%
72.0	8.006	0.841	1256.051	0.06%	99.00%
73.0	7.819	0.827	1256.878	0.06%	99.06%
74.0	7.646	0.813	1257.691	0.06%	99.13%
75.0	7.466	0.798	1258.49	0.06%	99.19%

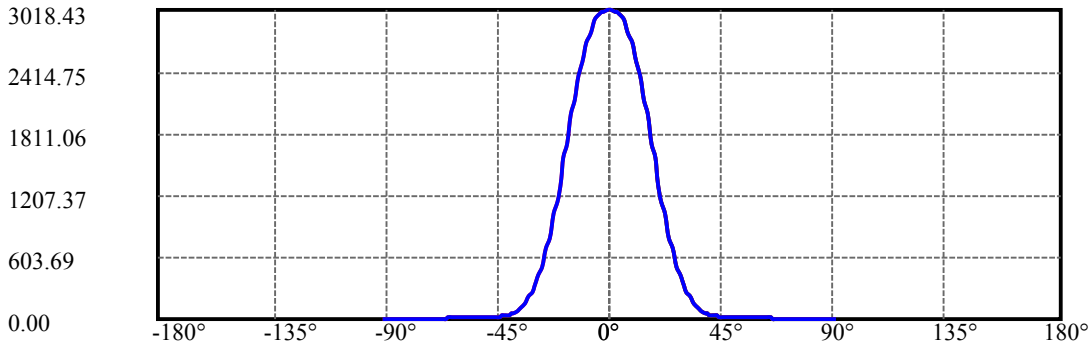
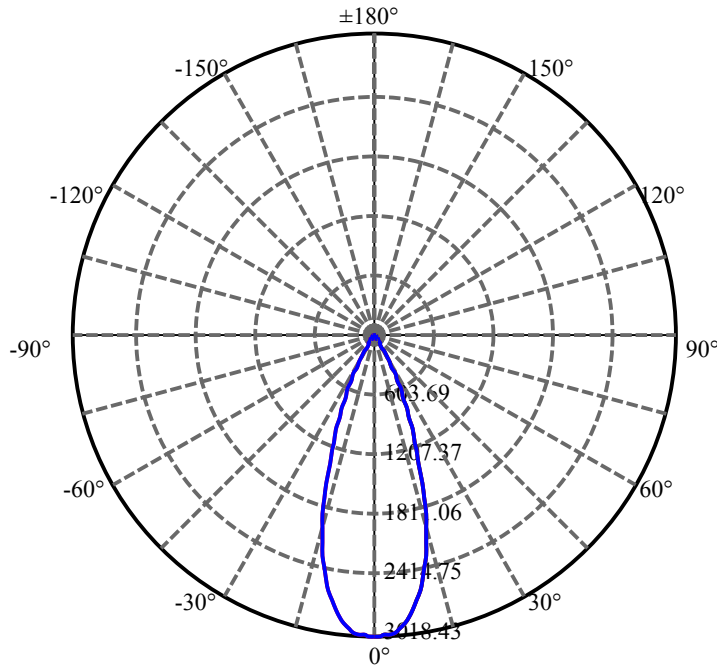
$\gamma(^{\circ})$	Average I(cd)	Zonal F(lm)	Sum F(lm)	Eff Flux(%)	Eff Sum(%)
76.0	7.300	0.784	1259.274	0.06%	99.25%
77.0	7.106	0.768	1260.042	0.06%	99.31%
78.0	6.947	0.752	1260.794	0.05%	99.37%
79.0	6.788	0.738	1261.532	0.05%	99.43%
80.0	6.636	0.724	1262.255	0.05%	99.49%
81.0	6.483	0.709	1262.965	0.05%	99.54%
82.0	6.345	0.696	1263.661	0.05%	99.60%
83.0	6.200	0.682	1264.343	0.05%	99.65%
84.0	6.061	0.668	1265.01	0.05%	99.70%
85.0	5.944	0.655	1265.666	0.05%	99.76%
86.0	5.812	0.643	1266.308	0.05%	99.81%
87.0	5.695	0.630	1266.938	0.05%	99.86%
88.0	5.611	0.619	1267.557	0.04%	99.90%
89.0	5.501	0.609	1268.166	0.04%	99.95%
90.0	5.452	0.601	1268.767	0.04%	100.00%

ZONAL LUMEN SUMMARY

Zone	Lumens	%Lamp	%Fixt
0-30	1129.30	81.54%	89.01%
0-40	1214.52	87.69%	95.72%
0-60	1245.11	89.90%	98.14%
0-90	1268.17	91.56%	99.95%
0-120	1268.17	91.56%	99.95%
0-180	1268.77	91.61%	100.00%
60-90	23.05	1.66%	1.82%
90-120	0.00	0.00%	0.00%
90-130	0.00	0.00%	0.00%
90-150	0.00	0.00%	0.00%
90-180	0.00	0.00%	0.00%
0-25.24	1015.01	73.29%	80.00%

ZONAL LUMEN SUMMARY

0-10	270.23
10-20	537.39
20-30	321.68
30-40	85.22
40-50	19.20
50-60	11.39
60-70	9.24
70-80	7.90
80-90	5.91
90-100	0.00
100-110	0.00
110-120	0.00
120-130	0.00
130-140	0.00
140-150	0.00
150-160	0.00
160-170	0.00
170-180	0.00



C0(Max): —————

C0/C180: —————

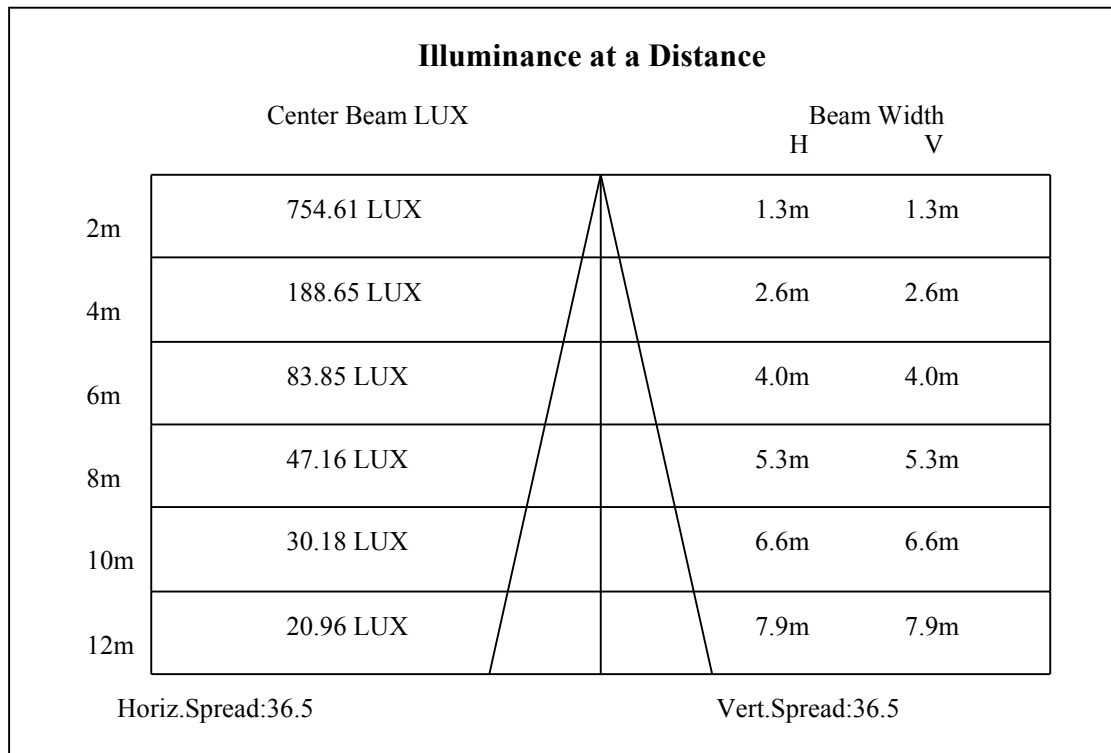
C90/C270: —————

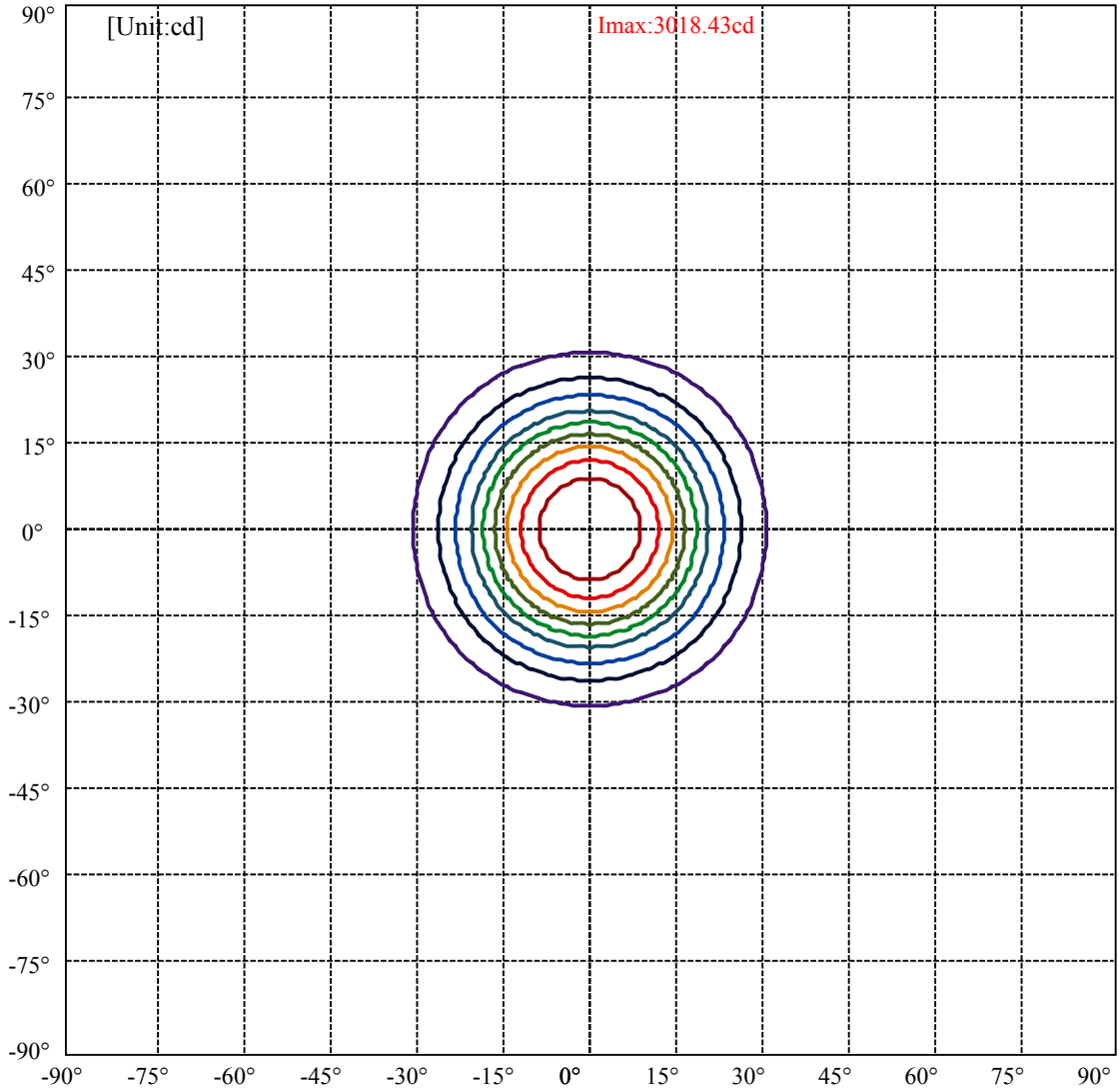
Field angle(10%Imax):C0/180Left:30.2 Right:30.2

:C90/270Left:30.2 Right:30.2

Beam Angle(50%Imax):C0/180Left:18.3 Right:18.3

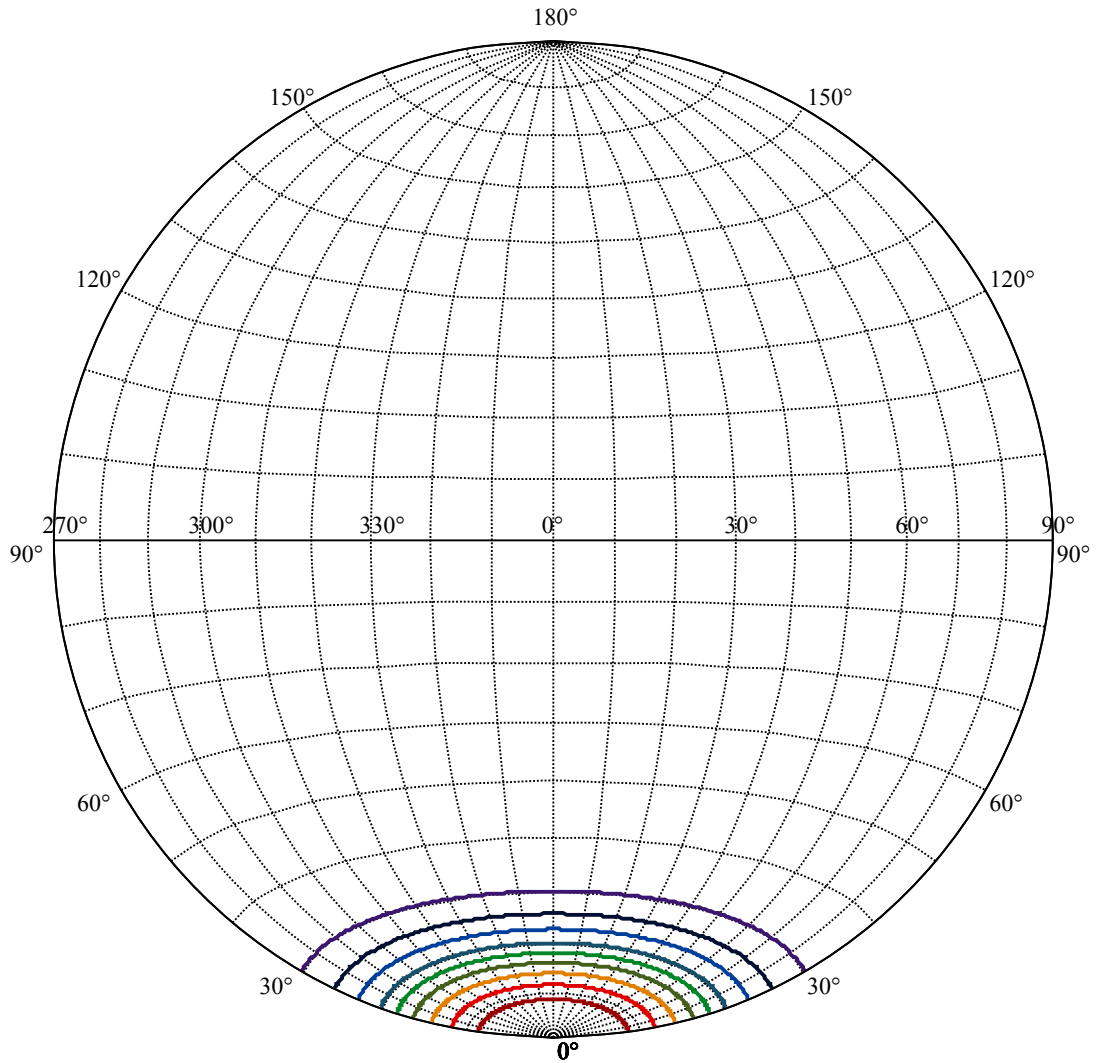
:C90/270Left:18.3 Right:18.3





(10%I <sub>max</sub> ) 301.843	—
(20%I <sub>max</sub> ) 603.686	—
(30%I <sub>max</sub> ) 905.529	—
(40%I <sub>max</sub> ) 1207.37	—
(50%I <sub>max</sub> ) 1509.22	—
(60%I <sub>max</sub> ) 1811.06	—
(70%I <sub>max</sub> ) 2112.9	—
(80%I <sub>max</sub> ) 2414.75	—
(90%I <sub>max</sub> ) 2716.59	—





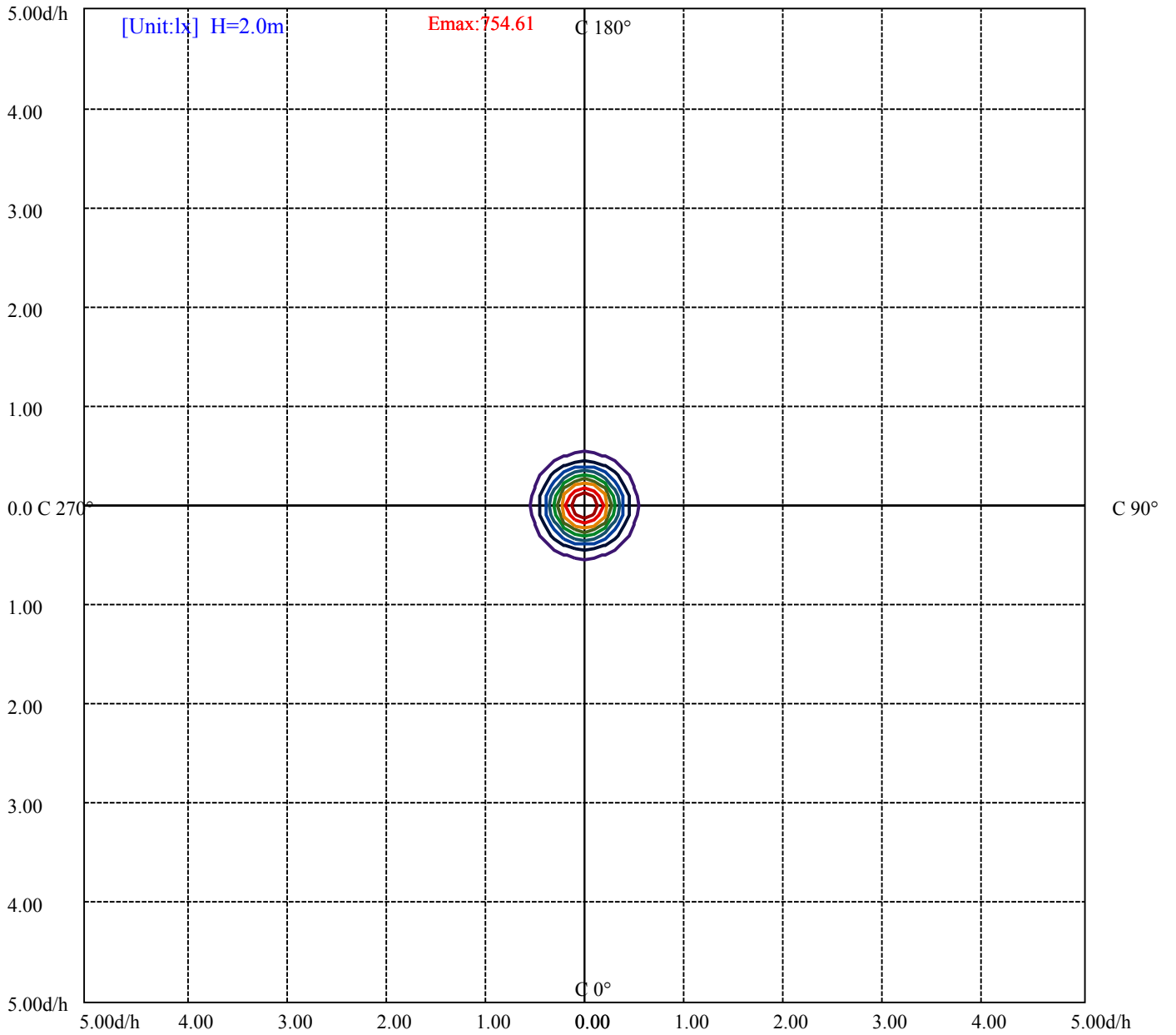
House

[Unit:cd]

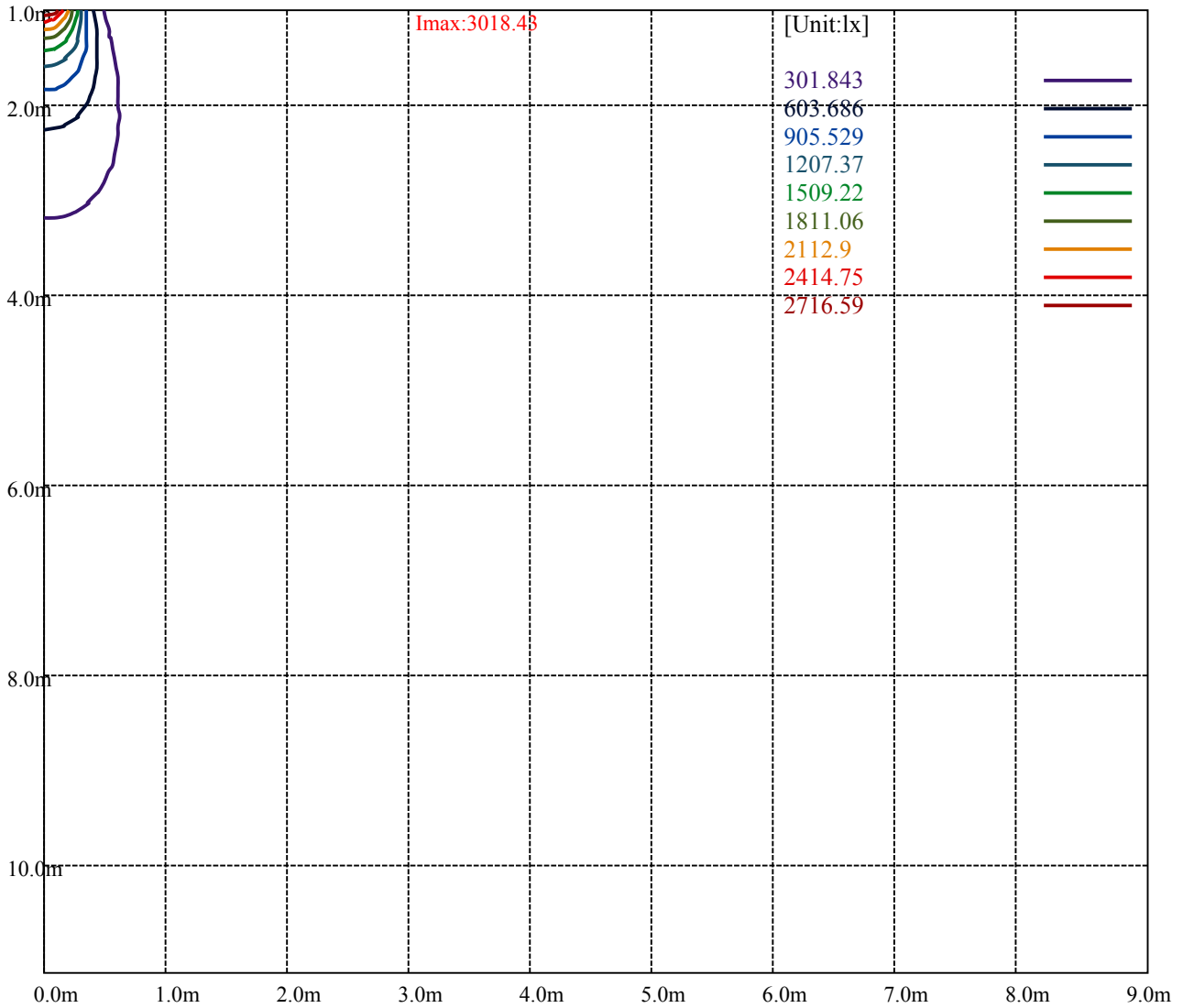
Road

Imax:3018.43

(10%Imax)	301.843	—
(20%Imax)	603.686	—
(30%Imax)	905.529	—
(40%Imax)	1207.37	—
(50%Imax)	1509.22	—
(60%Imax)	1811.06	—
(70%Imax)	2112.9	—
(80%Imax)	2414.75	—
(90%Imax)	2716.59	—



- (10%Emax) 75.46075
- (20%Emax) 150.9215
- (30%Emax) 226.3822
- (40%Emax) 301.8425
- (50%Emax) 377.305
- (60%Emax) 452.765
- (70%Emax) 528.225
- (80%Emax) 603.685
- (90%Emax) 679.1475



Luminance Table

$\gamma$	45	50	55	60	65	70	75	80	85
C0	0	0	0	0	0	0	0	0	0
C45	0	0	0	0	0	0	0	0	0
C90	0	0	0	0	0	0	0	0	0

L(Hor)(65)	L(Ver)(65)	L45(65)	L(Hor)(75)	L(Ver)(75)	L45(75)	L(Hor)(85)	L(Ver)(85)	L45(85)
0	0	0	0	0	0	0	0	0

Glare Table

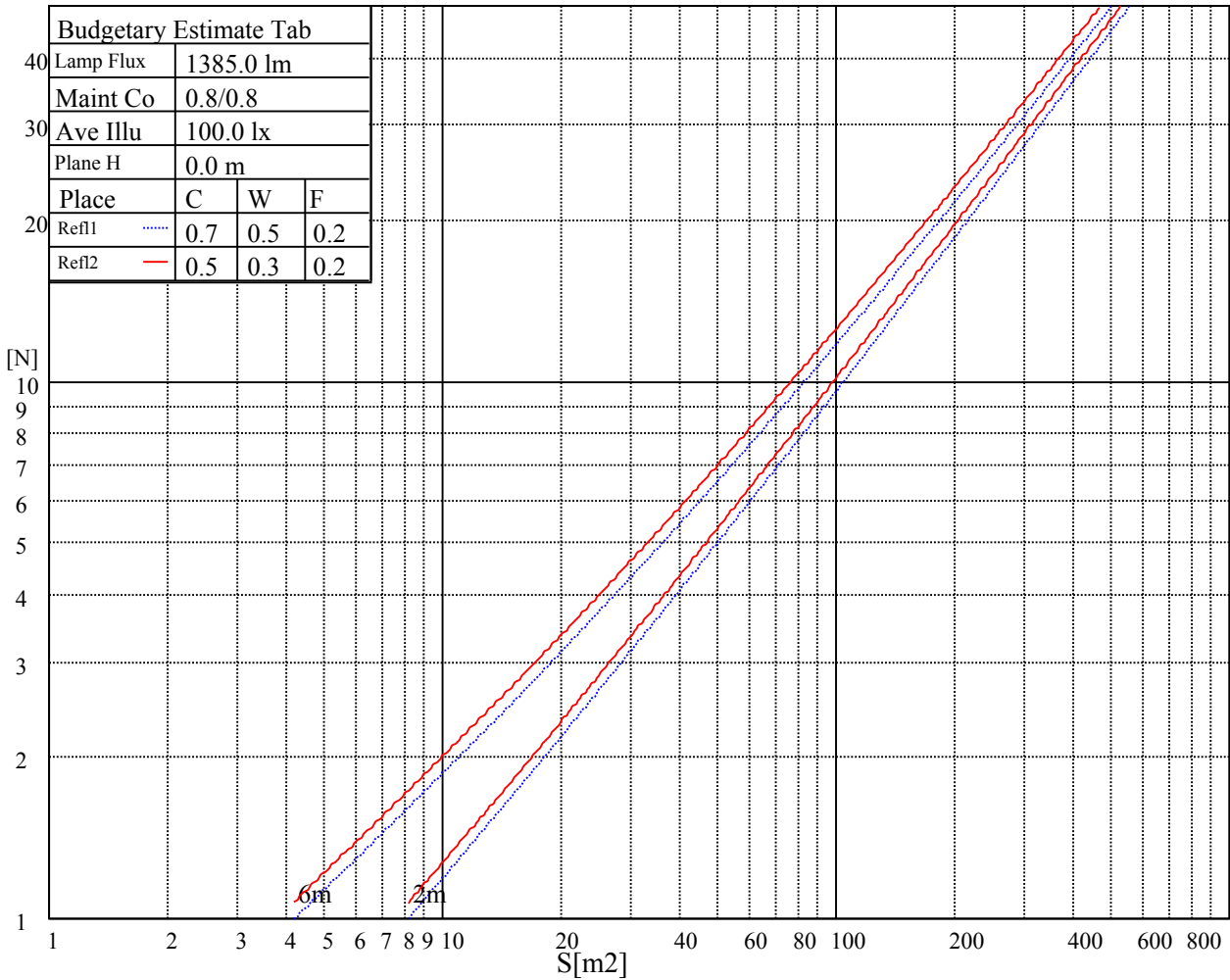
Glare	Quality	Service Values Illuminance(lx)							
1.15	A	2000	1000	500	<=300				
1.5	B		2000	1000	500	<=300			
1.85	C			2000	1000	500	<=300		
2.2	D				2000	1000	500	<=300	
2.55	E					2000	1000	500	<=300
		a	b	c	d	e	f	g	h

Luminance Limiting Curve

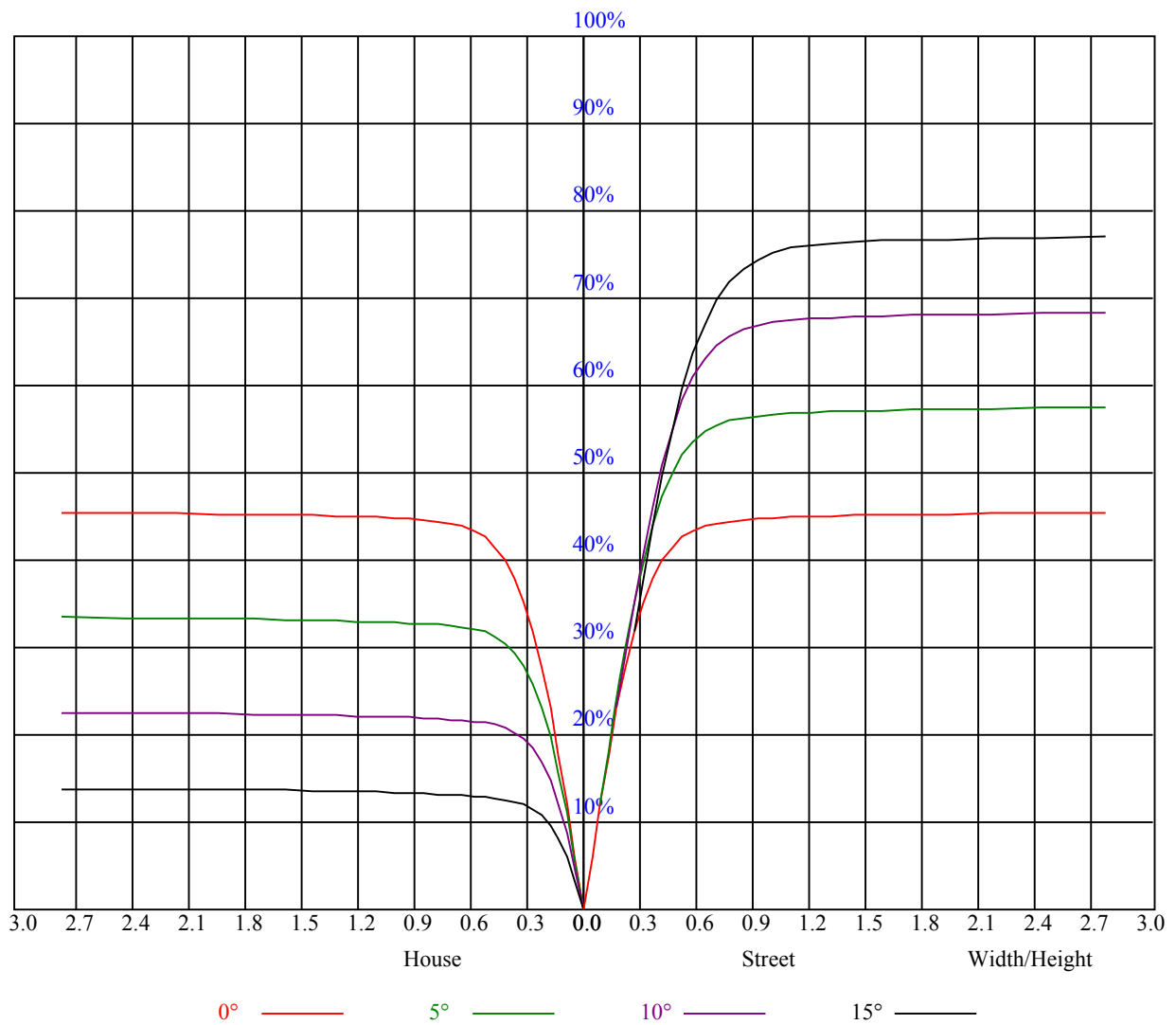


Illumination assessment according UGR											
Rf of Ceiling	70	70	50	50	30	70	70	50	50	30	
Rf of Wall	50	30	50	30	30	50	30	50	30	30	
Rf of Floor	20	20	20	20	20	20	20	20	20	20	
Room dimensions		Viewed crosswise					Viewed endwise				
X	Y										
2H	2H	非数字	非数字	非数字	非数字	非数字	非数字	非数字	非数字	非数字	
	3H	非数字	非数字	非数字	非数字	非数字	非数字	非数字	非数字	非数字	
	4H	非数字	非数字	非数字	非数字	非数字	非数字	非数字	非数字	非数字	
	6H	非数字	非数字	非数字	非数字	非数字	非数字	非数字	非数字	非数字	
	8H	非数字	非数字	非数字	非数字	非数字	非数字	非数字	非数字	非数字	
	12H	非数字	非数字	非数字	非数字	非数字	非数字	非数字	非数字	非数字	
4H	2H	非数字	非数字	非数字	非数字	非数字	非数字	非数字	非数字	非数字	
	3H	非数字	非数字	非数字	非数字	非数字	非数字	非数字	非数字	非数字	
	4H	非数字	非数字	非数字	非数字	非数字	非数字	非数字	非数字	非数字	
	6H	非数字	非数字	非数字	非数字	非数字	非数字	非数字	非数字	非数字	
	8H	非数字	非数字	非数字	非数字	非数字	非数字	非数字	非数字	非数字	
8H	12H	非数字	非数字	非数字	非数字	非数字	非数字	非数字	非数字	非数字	
	4H	非数字	非数字	非数字	非数字	非数字	非数字	非数字	非数字	非数字	
	6H	非数字	非数字	非数字	非数字	非数字	非数字	非数字	非数字	非数字	
	8H	非数字	非数字	非数字	非数字	非数字	非数字	非数字	非数字	非数字	
12H	12H	非数字	非数字	非数字	非数字	非数字	非数字	非数字	非数字	非数字	
	4H	非数字	非数字	非数字	非数字	非数字	非数字	非数字	非数字	非数字	
	6H	非数字	非数字	非数字	非数字	非数字	非数字	非数字	非数字	非数字	
	8H	非数字	非数字	非数字	非数字	非数字	非数字	非数字	非数字	非数字	
Variation with the observer position at spacings:											
S = 1.0H		非数字/非数字					非数字/非数字				
S = 1.5H		非数字/非数字					非数字/非数字				
S = 2.0H		非数字/非数字					非数字/非数字				
Standard tables:		BK0					BK0				
Uncorrected UGR		负无穷大					负无穷大				

UGR calculation is based on CIE Publ. 117 ,S/H = 0.25



RHOCC	80			70			50			30			10			0
RHOW	50	30	10	50	30	10	50	30	10	50	30	10	50	30	10	0
RCR	COEFFICIENTS OF UTILIZATION RHOF=20 CU															
0	1.09	1.09	1.09	1.07	1.07	1.07	1.02	1.02	1.02	0.97	0.97	0.97	0.93	0.93	0.93	0.92
1	1.02	1.00	0.98	1.00	0.98	0.97	0.97	0.95	0.94	0.93	0.92	0.91	0.90	0.89	0.88	0.87
2	0.96	0.93	0.90	0.95	0.92	0.89	0.92	0.89	0.87	0.89	0.87	0.86	0.87	0.85	0.84	0.82
3	0.91	0.87	0.84	0.90	0.86	0.83	0.88	0.85	0.82	0.85	0.83	0.81	0.83	0.81	0.80	0.78
4	0.87	0.82	0.79	0.86	0.82	0.79	0.84	0.80	0.78	0.82	0.79	0.77	0.80	0.78	0.76	0.75
5	0.83	0.78	0.75	0.82	0.78	0.74	0.80	0.77	0.74	0.79	0.76	0.73	0.77	0.75	0.73	0.71
6	0.79	0.74	0.71	0.78	0.74	0.71	0.77	0.73	0.70	0.76	0.72	0.70	0.75	0.72	0.69	0.68
7	0.76	0.71	0.68	0.75	0.71	0.68	0.74	0.70	0.67	0.73	0.69	0.67	0.72	0.69	0.67	0.66
8	0.72	0.68	0.65	0.72	0.68	0.65	0.71	0.67	0.64	0.70	0.67	0.64	0.69	0.66	0.64	0.63
9	0.70	0.65	0.62	0.69	0.65	0.62	0.68	0.65	0.62	0.68	0.64	0.62	0.67	0.64	0.61	0.60
10	0.67	0.63	0.60	0.67	0.62	0.60	0.66	0.62	0.59	0.65	0.62	0.59	0.65	0.62	0.59	0.58





Intensity data(cd)

C/γ(°)	0.0	1.0	2.0	3.0	4.0	5.0	6.0	7.0	8.0
0.0	2990.20	2965.29	2954.78	2918.24	2867.87	2804.21	2740.56	2682.44	2601.62
45.0	3025.07	3002.38	2983.56	2976.36	2947.58	2904.96	2856.25	2780.41	2717.31
90.0	3028.40	3017.88	3020.09	3006.25	2965.85	2924.88	2861.78	2800.34	2726.72
135.0	3030.06	3036.14	3037.25	3062.71	3056.63	3030.61	2993.52	2929.87	2868.42
180.0	2990.20	3027.29	3036.70	3042.23	3060.50	3063.27	3037.25	3005.15	2947.03
225.0	3025.07	3035.04	3031.72	3043.34	3023.41	2994.08	2934.29	2872.85	2804.21
270.0	3028.40	3030.61	3021.20	3011.24	3008.47	2989.65	2937.62	2890.01	2811.96
315.0	3030.06	3009.58	2985.22	2966.95	2936.51	2895.55	2839.09	2760.48	2696.83
360.0	2990.20	2965.29	2954.78	2918.24	2867.87	2804.21	2740.56	2682.44	2601.62
C/γ(°)	9.0	10.0	11.0	12.0	13.0	14.0	15.0	16.0	17.0
0.0	2499.77	2405.11	2298.84	2163.22	2048.64	1898.07	1767.99	1639.02	1479.60
45.0	2639.81	2557.34	2473.75	2347.55	2248.46	2097.35	1970.03	1843.27	1682.20
90.0	2628.74	2546.27	2444.41	2298.84	2175.95	2017.64	1884.79	1749.17	1616.33
135.0	2795.36	2710.11	2598.85	2494.23	2373.56	2248.46	2081.30	1937.38	1760.80
180.0	2870.08	2789.82	2697.38	2599.41	2461.57	2343.67	2218.02	2081.30	1903.61
225.0	2721.74	2612.14	2514.16	2406.22	2289.98	2138.31	2003.25	1864.86	1693.82
270.0	2752.73	2673.58	2579.48	2463.24	2354.74	2241.27	2115.61	1958.96	1831.10
315.0	2621.55	2544.60	2427.26	2326.51	2219.68	2068.56	1941.80	1812.83	1649.54
360.0	2499.77	2405.11	2298.84	2163.22	2048.64	1898.07	1767.99	1639.02	1479.60
C/γ(°)	18.0	19.0	20.0	21.0	22.0	23.0	24.0	25.0	26.0
0.0	1357.27	1077.40	1077.40	964.43	855.93	751.98	654.28	545.90	464.86
45.0	1554.88	1424.80	1301.36	1148.59	1029.58	913.89	780.49	681.96	590.62
90.0	1451.92	1096.55	1096.55	1065.83	918.26	805.56	703.99	613.93	511.52
135.0	1627.40	1496.76	1329.04	1198.96	1080.50	965.92	834.18	738.97	652.62
180.0	1765.78	1624.63	1440.30	1314.09	1196.74	1053.93	942.12	846.91	736.76
225.0	1555.99	1418.16	1101.59	1101.59	1018.67	891.97	796.15	707.97	625.83
270.0	1698.80	1560.42	1388.27	1262.06	1107.07	987.51	869.61	744.51	648.74
315.0	1513.92	1255.97	1097.66	1097.66	981.09	841.87	740.69	646.47	559.68
360.0	1357.27	1077.40	1077.40	964.43	855.93	751.98	654.28	545.90	464.86
C/γ(°)	27.0	28.0	29.0	30.0	31.0	32.0	33.0	34.0	35.0
0.0	392.79	330.79	265.59	221.36	176.36	147.41	122.77	97.26	80.48
45.0	507.04	415.71	354.26	299.46	286.73	230.33	157.98	131.74	109.27
90.0	436.96	372.81	304.28	257.28	207.47	173.53	144.92	120.67	94.82
135.0	571.25	479.92	413.49	354.82	288.95	288.95	234.20	160.80	132.96
180.0	655.39	579.55	491.54	425.67	364.78	308.87	283.41	283.41	167.61
225.0	529.90	459.27	394.51	335.55	271.29	225.84	187.59	148.18	122.00
270.0	562.39	486.56	401.31	340.42	287.29	287.29	187.26	155.43	129.03
315.0	461.10	393.84	332.56	279.26	221.47	184.00	145.86	120.95	99.80
360.0	392.79	330.79	265.59	221.36	176.36	147.41	122.77	97.26	80.48
C/γ(°)	36.0	37.0	38.0	39.0	40.0	41.0	42.0	43.0	44.0
0.0	67.25	54.19	45.89	39.52	34.60	30.72	26.90	24.36	22.31
45.0	90.56	71.57	59.67	50.04	42.62	35.70	31.66	28.34	25.68
90.0	78.77	65.76	55.02	44.50	38.36	33.54	29.01	26.24	23.86
135.0	109.66	86.02	71.18	59.28	47.66	40.74	35.48	31.39	27.40
180.0	131.02	108.16	89.12	69.86	57.62	47.94	39.02	33.77	29.67
225.0	100.41	78.93	65.15	51.53	42.95	36.64	31.88	28.23	24.69
270.0	101.57	84.25	70.02	56.07	47.22	38.69	33.82	30.11	27.07
315.0	78.33	64.87	54.25	45.56	37.25	32.44	28.84	25.91	23.08
360.0	67.25	54.19	45.89	39.52	34.60	30.72	26.90	24.36	22.31

Intensity data(cd)

C/γ(°)	45.0	46.0	47.0	48.0	49.0	50.0	51.0	52.0	53.0
0.0	20.26	18.93	17.44	16.50	15.67	14.72	14.06	13.45	12.90
45.0	22.97	21.20	19.37	18.16	16.99	15.89	15.06	14.39	13.73
90.0	21.48	19.98	18.65	17.21	16.22	15.39	14.50	13.84	13.23
135.0	24.96	22.97	21.26	19.37	18.10	16.77	15.89	15.06	14.17
180.0	26.51	23.47	21.53	19.93	18.27	17.10	16.16	15.17	14.39
225.0	22.47	20.76	19.21	17.66	16.66	15.55	14.83	14.12	13.34
270.0	24.02	22.14	20.54	19.15	17.66	16.66	15.83	15.06	14.12
315.0	21.20	19.71	18.10	16.99	16.11	15.11	14.39	13.78	13.06
360.0	20.26	18.93	17.44	16.50	15.67	14.72	14.06	13.45	12.90
C/γ(°)	54.0	55.0	56.0	57.0	58.0	59.0	60.0	61.0	62.0
0.0	12.29	11.90	11.46	11.13	10.79	10.46	10.19	9.85	9.63
45.0	13.17	12.51	12.07	11.68	11.18	10.85	10.46	10.19	9.96
90.0	12.73	12.18	11.79	11.40	11.07	10.68	10.41	10.13	9.85
135.0	13.51	12.95	12.51	11.90	11.57	11.18	10.85	10.52	10.24
180.0	13.73	13.17	12.51	12.07	11.68	11.29	10.85	10.57	10.30
225.0	12.84	12.34	11.85	11.46	11.07	10.74	10.46	10.19	9.91
270.0	13.51	12.84	12.34	11.96	11.46	11.07	10.79	10.52	10.19
315.0	12.51	12.12	11.73	11.24	10.90	10.63	10.35	10.02	9.80
360.0	12.29	11.90	11.46	11.13	10.79	10.46	10.19	9.85	9.63
C/γ(°)	63.0	64.0	65.0	66.0	67.0	68.0	69.0	70.0	71.0
0.0	9.41	9.19	8.97	8.80	8.58	8.41	8.30	8.14	7.92
45.0	9.69	9.47	9.24	9.08	8.86	8.69	8.52	8.36	8.19
90.0	9.63	9.41	9.19	9.02	8.86	8.58	8.47	8.30	8.14
135.0	9.96	9.69	9.47	9.24	9.02	8.86	8.64	8.47	8.30
180.0	9.96	9.74	9.52	9.24	9.02	8.86	8.64	8.47	8.30
225.0	9.69	9.41	9.24	9.02	8.80	8.64	8.41	8.25	8.14
270.0	9.96	9.69	9.52	9.24	9.08	8.86	8.64	8.47	8.36
315.0	9.58	9.30	9.08	8.86	8.69	8.52	8.30	8.19	8.03
360.0	9.41	9.19	8.97	8.80	8.58	8.41	8.30	8.14	7.92
C/γ(°)	72.0	73.0	74.0	75.0	76.0	77.0	78.0	79.0	80.0
0.0	7.80	7.58	7.47	7.25	7.09	6.92	6.75	6.64	6.42
45.0	8.03	7.80	7.64	7.47	7.31	7.09	6.97	6.81	6.64
90.0	7.92	7.75	7.58	7.36	7.25	6.97	6.86	6.70	6.59
135.0	8.14	7.97	7.75	7.58	7.42	7.25	7.03	6.86	6.70
180.0	8.14	7.97	7.80	7.64	7.47	7.25	7.09	6.92	6.75
225.0	7.92	7.75	7.58	7.42	7.25	7.03	6.86	6.75	6.64
270.0	8.19	8.03	7.80	7.64	7.42	7.31	7.14	6.92	6.75
315.0	7.92	7.69	7.53	7.36	7.20	7.03	6.86	6.70	6.59
360.0	7.80	7.58	7.47	7.25	7.09	6.92	6.75	6.64	6.42
C/γ(°)	81.0	82.0	83.0	84.0	85.0	86.0	87.0	88.0	89.0
0.0	6.31	6.20	6.09	5.92	5.87	5.70	5.65	5.48	5.48
45.0	6.48	6.31	6.20	6.03	5.92	5.81	5.65	5.59	5.54
90.0	6.42	6.31	6.14	6.03	5.87	5.76	5.65	5.65	5.42
135.0	6.59	6.42	6.25	6.09	5.98	5.81	5.76	5.65	5.54
180.0	6.59	6.48	6.31	6.14	6.03	5.87	5.76	5.65	5.59
225.0	6.42	6.31	6.14	6.03	5.92	5.81	5.65	5.65	5.42
270.0	6.64	6.42	6.31	6.20	6.03	5.92	5.81	5.65	5.59
315.0	6.42	6.31	6.14	6.03	5.92	5.81	5.65	5.59	5.42
360.0	6.31	6.20	6.09	5.92	5.87	5.70	5.65	5.48	5.48

Intensity data(cd)

<b>C/γ(°)</b>	<b>90.0</b>
<b>0.0</b>	<b>5.48</b>
<b>45.0</b>	<b>5.42</b>
<b>90.0</b>	<b>5.42</b>
<b>135.0</b>	<b>5.48</b>
<b>180.0</b>	<b>5.42</b>
<b>225.0</b>	<b>5.42</b>
<b>270.0</b>	<b>5.48</b>
<b>315.0</b>	<b>5.48</b>
<b>360.0</b>	<b>5.48</b>